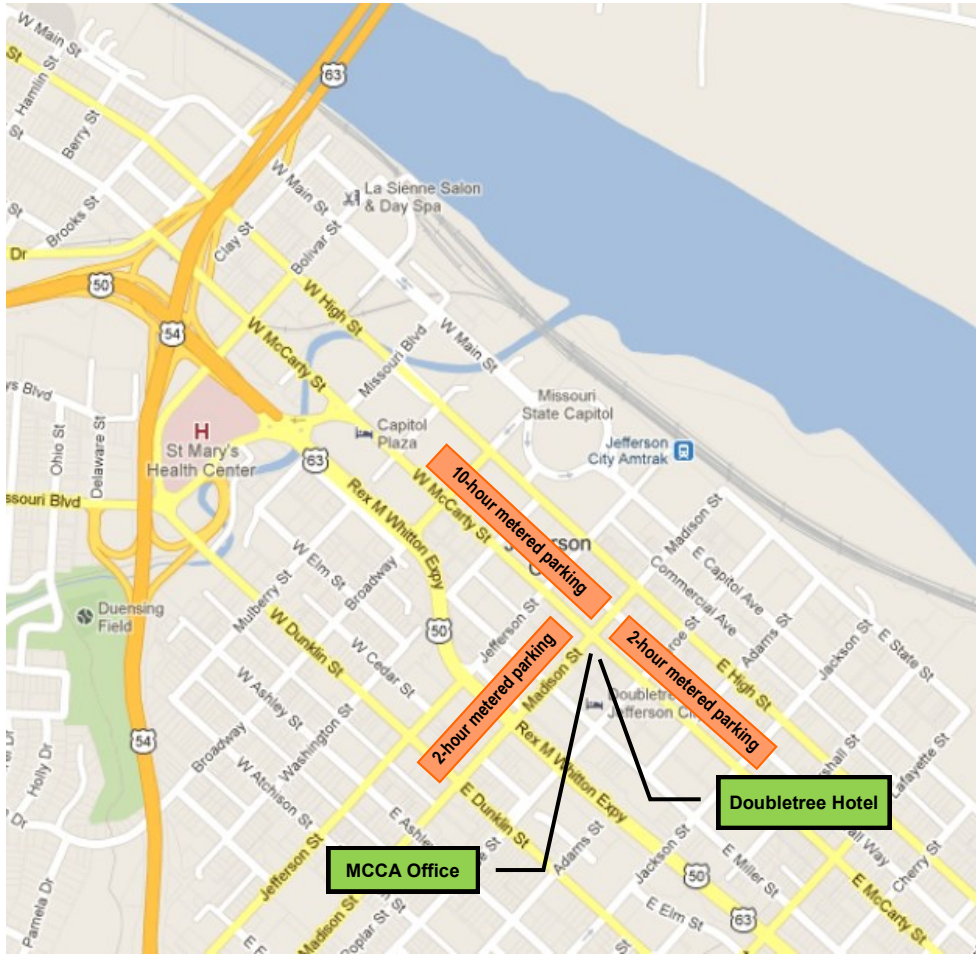


mcca MISSOURI COMMUNITY COLLEGE ASSOCIATION



Directions to MCCA

200 East McCarty Street, Suite 100
Jefferson City, Missouri

Coming in on US 63/54

(From St. Louis/Kansas City/Columbia/Moberly)

After you cross the bridge over the Missouri River, take the Main Street/Capitol exit.

Take a left onto Main Street and stay on it until you've gone halfway around the circle drive that goes around the Capitol; exit the circle drive on Capitol Avenue.

Stay on Capitol Avenue until you reach Madison Street. The Governor's Mansion will be on your left.

Take a right on Madison and head down the hill until you reach the MCCA office.

Coming in on US 54

(From Springfield/Neosho)

Take the Madison Street exit off 54.

Stay on Madison until you reach the MCCA office.

Coming in on US 63

(From Poplar Bluff/West Plains)

As you come into Jefferson City, 63 becomes the Rex M. Whitton Expressway. Stay on the expressway until you reach Madison Street.

Turn right on Madison and stay on it until you reach the MCCA office.

Coming in on US 50

(From Sedalia/Warrensburg)

Stay on 50 until you reach Madison Street. Turn left on Madison and stay on it until you reach the MCCA office.

Parking at MCCA

There is no visitor parking in the MCCA parking lot. Meeting attendees generally park at metered spots on Madison Street or McCarty Street.

The parking meters on Madison and beyond the southeast corner of McCarty are two-hour meters. They can only be "fed" for two hours.

The parking meters beyond the northwest corner of McCarty are ten-hour meters. They can be fed for up to ten hours.

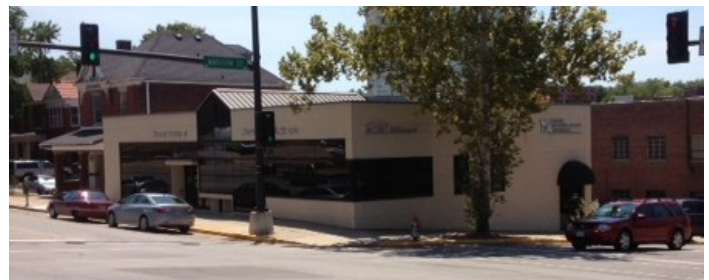
Parking rates:

- 25¢ for an hour
- 10¢ for 24 minutes
- 5¢ for 12 minutes



About the MCCA Office

MCCA's offices are in the bottom floor of the Missouri Society for Professional Engineers Building. The building is at the corner of Madison and McCarty, diagonal from the Presbyterian Church.



The entrance to the MCCA office is off the parking lot on the bottom floor of the building.